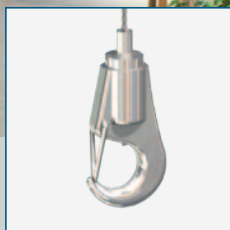
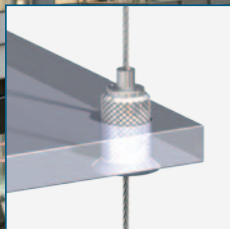
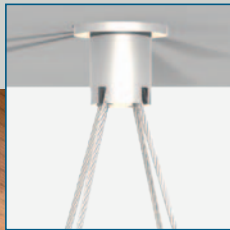


Shop | Display

Individual suspension solutions
for signs, presentation and shelves
in shops & galleries



REUTLINGER[®]
systematic suspension

REUTLINGER - Specialists for cable attachments



Functionality and design:
Cable holder systems of REUTLINGER

From a traditional workshop into a global high-tech company

"Technology should help us reach our goals. Therefore REUTLINGER constantly strives for logic and simplicity in all our products. Each detail must be functional and each function must make sense."

For REUTLINGER this is not just a motto, but an obligation. In the year 1864 W.B. Reutlinger began with the industrial manufacture and processing of hemp rope and mechanical steel cable. Wolf Reutlinger, who has lead the company since 1987, continued this tradition of craftsmanship while initiating innovative processes which opened up new applications and markets.

More than meets the eye

The use of REUTLINGER fastening attachments always results in permanent connections. This is the effect guaranteed by the self-locking mechanisms at the heart of our attachments. The elements devised specifically for this purpose are based on the following principle: the heavier the load – the greater the clamping force.

For Safe Working Loads up to 400 kg

By continually expanding the range of our products we were able to dominate the world market for suspended lighting fixtures within a few years. Today we are proud to count virtually all producers of high-quality lighting fixtures – as well as the automobile industry, sign- and shelf-manufacturers, galleries and museums – among our regular customers.

Customer demands – a constant incentive to innovate

Highly qualified employees, the use of modern CAD systems and fully automated production facilities allow us to consistently turn out innovative products of unvarying high quality. We individually develop and manufacture our products in close cooperation with our customers.

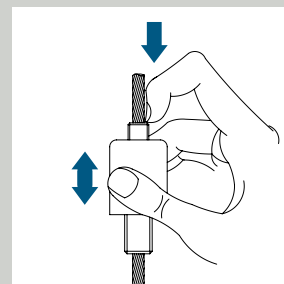
We put all our know-how at the disposal of our customers – from initial pre-planning to detailed construction and manufacture right up to final installation.

WILHELM REUTLINGER
MECHAN. SEILERWAREN-
HANF- u. DRAHTSEIL-FABRIK
FRANKFURT A. M.

Adjustment without tools

The basic principle of REUTLINGER cable holders is simple enough:

- A** The wire cable is threaded into the top of the holder.
- B** As soon as the holder settles on the cable it self-locks.



- C** Once the load has been taken off again, the holder can be moved up or down the cable to any desired new position.

Information on load capacity and safety instructions with each shipment, or download item at www.reutlinger.de

REUTLINGER: The only TÜV-GS certified cable holders.



The German TÜV is internationally respected as a rigorous testing institution that's highly trusted by producers and consumers – especially for technical products.

The highest and most comprehensive level of TÜV testing is GS-certification, denoting safe equipment, and recognizable by the well-known blue sticker.

REUTLINGER is the world's only manufacturer of cable suspension systems that has succeeded in complying with the demands of GS certification with every product line. Our promise: safety confirmed by the TÜV.

Important Notice!

Cable diameters

When no other measurements are specified, we generally recommend the use of cable with 1.5mm diameter. Further cable diameters available on demand or by consultation.

Product illustrations

all illustrations to original scale when not otherwise specified.

System chart cable attachment / coupling 04

Suspension from ceiling 06

Ceiling attachment	6
Ceiling track	8
Trackclips	10
Special items	12

Tensioning ceiling / floor 13

Tensioners and holders	13
Ceiling- / floor tracks	14
Ceiling track / banner weights	15

Suspension on walls 16

Gallery track	16
Hinged tensioner	18
Pull-out shelf support	19

Tensioning on walls 20

Tensioners and holders	20
----------------------------------	----

Attaching objects to cables | Displayholder ›Avant‹ 21

Display holders	21
Multiple – cable suspensions	29
Cable- and gallery holder	30

Object attachment to vertical bars 26

Display holder ›Side‹	26
---------------------------------	----

Object attachment to walls 23

Wall adapter for signs / displays	23
Pull-out wall hanger / pull-out wall hanger	31

Shelf systems 32

Basic installation system	32
Attachment of shelf to cable	34

Cables and terminals 36

Accessories 38

Contact 40

System overview | Cable attachments & exhibit couplings

Smart combinations make problem-solving easy

REUTLINGER attachment systems usually consist of suspended or tensioned wire-robe cables to which the objects to be exhibited are attached by cable holders.

The following short overview is designed to help you decide which solution best suits your requirements.

Attachment of cable system to walls or ceilings



Suspension from ceilings

The vertical cable is hung from the ceiling

Ceiling attachment

Fixed attaching of cables to ceilings

Ceiling track

Flexible attachment of cable to ceiling track

Track clips

Attachment of cables to horizontal braces of false ceilings



Tensioning between floors and ceilings

Vertical cable is tensioned between ceiling and floor

Tensioner/holder

Fixed attaching of cables to ceiling and floor

Ceiling- and floor-track

Flexible attaching of cable-ends to a ceiling-track and a floor-track

Tensioning with banner weights

Banner weights tension any suspension



Tensioning between walls

Tensioner / holder

Cable is tensioned horizontally or diagonally between walls



Suspension from walls

The vertical cable is hung from the ceiling

Gallery tracks

Flexible horizontal attachment of cables to walls

Hinged tensioner

Quick attaching of cables to walls

Extendable sign hanger

Fixed attaching of cables to an extension from the wall



Tensioning on walls

The vertical cable is tensioned between two attachments parallel to the wall

Hinged tensioner and holder

Fixed attaching of vertical or horizontal cables between hinged tensioner and hinged holder

Shelving systems



Tensioned shelves

A special form of on-the-wall tensioning. Tensioning of the cables necessary for attaching shelves to cables

Attaching objects to walls



Attaching directly to walls

Attaching objects without Cables – directly to the wall.

Wall adaptor

for signs and displays

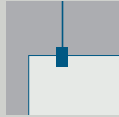
Wall-mounted extender

for the suspension of objects

Wall-mounted extender

for supporting shelves

Attaching objects to cables



Attaching signs and displays

Attaching displays or exhibits to tensioned or suspended cables

Display holder

Attaching displays or signs between or in front of cables

Cable- or gallery holder

Attaching pictures or exhibits to vertical cables hung from gallery tracks



Suspension of objects from multiple cables

Attaching horizontal objects on multiple vertical cables. Suspending hub can be attached to ceiling or suspending cable.



Attaching shelves to shelving system

Shelf holder

Attaching shelves to vertical cables of installed shelving system

We recommend:

Installation of REUTLINGER cable-attachment systems is usually done in two easy steps:

Step 1 Attaching of cables.

First attach cables or nylon wires. This can be done in 4 basic ways:

- suspension from ceiling (see page 6)
- tensioning between ceilings and floors (see page 13)
- suspension from walls (see page 16)
- tensioning on walls (see page 20)

Step 2 Attaching object to cables

The means of attaching objects to cables or nylon wires depends on how the cables were attached.

Please do not hesitate to contact us for any questions you might have.

Suspension from ceilings / ceiling attachments

One-part ceiling attachments

Coupling of cable directly into ceiling attachment



01
**Ceiling attachment
M6i m.R.**

One-part with coupling thread M6i;
art. no. 029.006.200

Two-part ceiling attachments

Coupling of cable to removable screw-cap



02
**Ceiling attachment
M10x1 without bore**

two-part with coupling thread M6i;
art. no. 193.000.540



03
**Ceiling attachment
M8x1 short**

two-part with coupling thread M6i;
art. no. 193.001.380



04
**Ceiling attachment
Ellipse**

two-part with coupling thread M6i;
art. no. 193.005.441



05
**Ceiling attachment
Type 15**

two-part with coupling thread M6i,
with adjusting mechanism,
Length 28 mm, Diameter 12 mm,
flange diameter 16 mm,
art. no. 193.000.427

Suspension from ceilings / ceiling attachments ›Quick‹ and ›Multiple‹

Hinged ceiling attachment

Suspension from slanted ceilings



01
Schrägdeckenbefestigung
Ø 16 mm

For slanted ceilings; two-part with coupling thread M6i; art. no. 193.000.663



02
Schrägdeckenhalter Typ 15
Ø 24 mm

For slanted ceilings; two-part with coupling thread M6i, with adjusting mechanism, art. no. 193.000.166

Speedsuspension ›Quick‹

No more irritating threading: simply insert the swaged-on cable end!



03
Ceiling attachment Quick
Ellipse

Art. no. 193.002.080

Also available in ›Cone‹ and ›Cylinder‹ (Custom made on customer demand only!)



04
Ceiling attachment Quick
Screw-cap M13x1

Art. no. 193.002.550

M8x1

art. no. 193.002.560

M10x1

art. no. 193.002.510

Multiple-cable suspension

Speedy levelling without tools



05
Ceiling attachment
triple cable

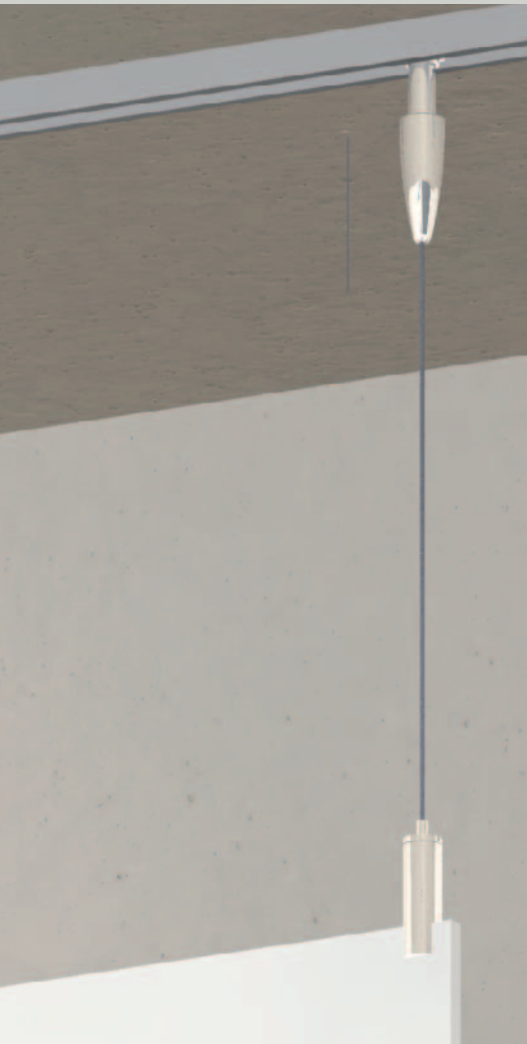
Attachment to ceiling with M6i, art. no. 193.000.095



06
Ceiling attachment
quadruple cable

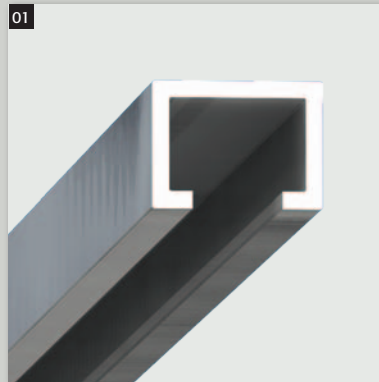
Attachment to ceiling with M6i, art. no. 193.000.097

Suspension from ceiling | Ceiling track & tensioner



Flexibility on ceilings

The use of special ceiling tracks and appropriate tensioners make it possible to move a suspension from the ceiling to any desired point.



01
Ceiling / Floor track aluminum
for use under or on ceiling plaster;
various lengths available



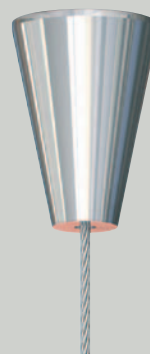
02
Tensioner for track ›Cylinder‹
Attachment to ceiling track,
art. no. 193.005.458

Tensioner for track ›Ellipse‹
art. no. 193.005.449

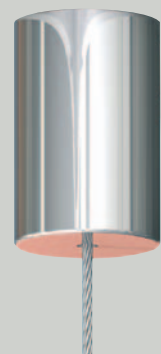
Tensioner for track ›Cone‹
art. no. 193.005.457



›Ellipse‹



›Cone‹

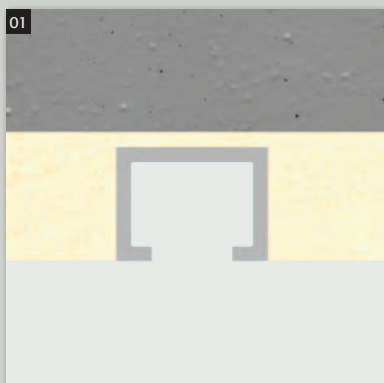


›Cylinder‹

Suspension from ceilings | Ceiling track & Flex track attachment

Flex track attachment

By putting entry-bores into the ceiling profile the Flex track attachments can be inserted into it after installation.



01

Ceiling / floor track for Flex track attachment with entry-bores, usable on or below ceiling plaster, available in various lengths.



02

Flex track attachment, nickel plated

Attachment to special ceiling track for Flex track attachments

Cylinder 13 mm

Length	15 mm
Diameter	13 mm
Art. no.	193.006.410

Cylinder 20 mm

Length	31 mm
Diameter	20 mm
Art. no.	193.006.414

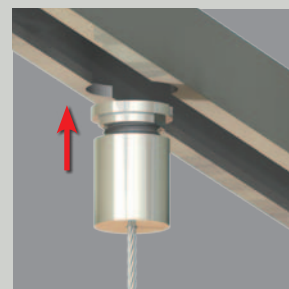
Ellipse

Length	40 mm
Diameter	14 mm
Art. no.	193.006.412

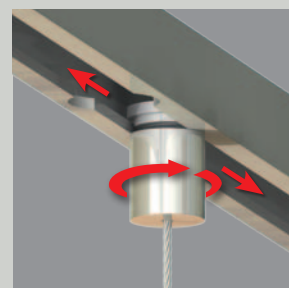
Cone

Length	29 mm
Diameter	20 mm
Art. no.	193.006.413

Simple installation



1. Attach Flex track at entry-bores.



2. Move to desired position and screw tight. That's it!

Suspension from ceilings | Track clips



- A** Track-clip for the coupling of track-clip/cable
- B** Cable, also with swaged-on terminals
- C** coupling of cable and object; i.e. hooks

REUTLINGER track clips allow you to suspend price signs and other objects easily, quickly and flexibly from common grid ceilings.

Compatibility

REUTLINGER track-clips are compatible with common T-profiles of 24 mm and 26 mm width.

Versatility

Aside from signs and lighting fixtures, many electronic appliances like cameras, movement detectors, blinking lights etc. can easily be suspended.

Quick & simple installation, secure grip

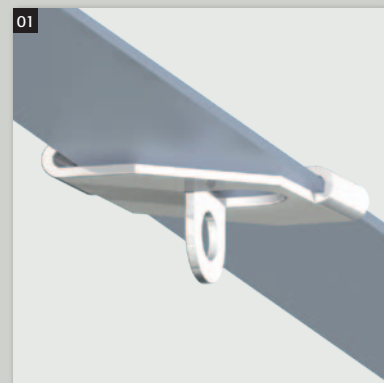
Track-clips are snapped onto the T-track with a turning movement, and provide a secure grip.

Height adjustment without tools

Custom-made sets for infinite height-adjustment of the suspended object without tools.

Important notice

- Curving of track after inserted and loaded clip may not exceed 4mm.
- Point loads (signs; light fixtures) must be directly attached to the concrete ceiling above the track.
- Please observe manufacturer's load specifications of T-track.



01

Track-Clip ›Basic‹

with stoppers, white RAL 9003

interior-ø of eyelet 5,6 mm

WLL (DIN 18168) 20 kg

Art. no. 029.005.243



02

Track-Clip ›Profi‹ M6x10

with stoppers, white RAL 9003

coupling thread M6x10 mm

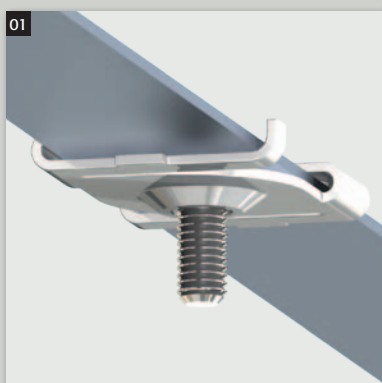
WLL (DIN 18168) 20 kg

Art. no. 029.006.027

Information

Ask about our handy sets!
We supply complete sets custom made to your individual requirements, consisting of components a, b and c (see illustration at left).

Suspension from ceilings | Track-clips



01
Track-Clip ›Premium‹ M6x11
 with spring clamp, white RAL 9003
 coupling thread M6x11 mm
 WLL (DIN 18168) 20 kg
 Art. no. 029.005.135



02
Track-Clip ›Premium‹ M6x11 zinc plated
 with spring clamp, zinc plated
 coupling thread M6x11 mm
 WLL (DIN 18168) 20 kg
 Art. no. 029.005.335



03
Track-Clip ›Quick‹ white
 for cables ø 1,0 - 1,5 mm
 with ball sleeve 35
 WLL (DIN 18168) 25 kg
 Art. no. 029.006.356



04
T track-clip with bore
 off-white similar to RAL 9001
 bore 4 mm
 WLL (DIN 18168) 5 kg
 Art. no. 029.005.579

Recommended combinations (more options on request)

Track-Clip	Coupling Track-Clip/Cable (depends on type of Track-Clips)		Coupling Cable/Object (independent of Track-Clip)	
›Basic‹ ›T-Clip‹		Wire hook with safety gate (Page 37)		Cable holder Type 15 hook (Page 30)
›Profi‹ ›Premium‹		Ceiling attachment M6i knurled (Page 6)		Cable holder Type 15 Bo (Page 30)
		Ceiling attachment M6i knurled wrench opening 7 (Catalog Mini, P.14)		Safety-Design- holder Type 15/18 (Page 30)
›Quick‹		Cable ø 1,0 to 1,5 mm with ball sleeve 35 (Page 36)		Cable holder Type 12 fork (Catalog Mini P. 11)

Suspension from ceilings | special products

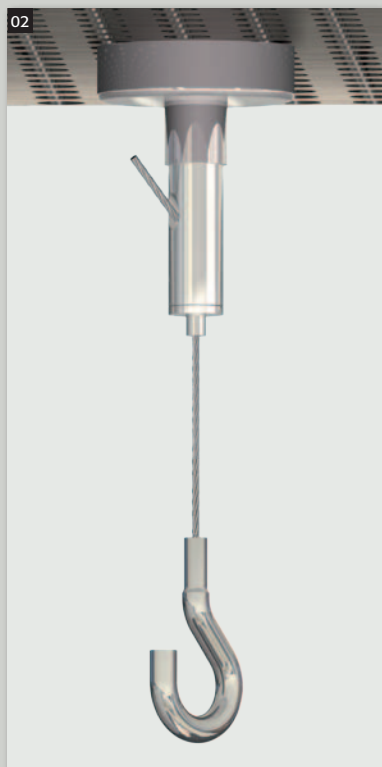


01
**Combination of cable holder
Type 15ZW M4i o.R, set screw
M4x10 with groove nut M4**

for use in special track (see illustration 1A) groove nut dimensions:
20 x 11 x 3mm (l x w x h)
Art.No. 193.001.859

TIP!

Later installation possible at any desired position; groove nut affixable and can't be lost.



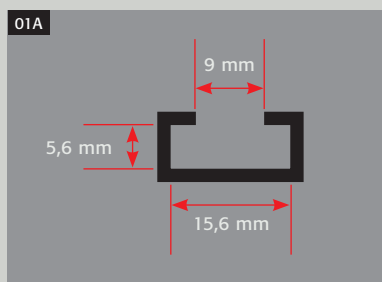
02
**Magnetic holder
Type 10ZW M4 o.R.**

for cable diameters 0,45 - 1,0 mm
Strength of magnet 2 kg
Magnet height 15 mm
Magnet-ø 25 mm
Strength of magnet 2 kg
Holder-ø 7 mm
Holder-Length 19 mm
Art. no. 193.002.650

Notice

Cable and hook (illustration 2) are examples of applications.

Other combinations of magnets and holders possible.



03
**Decorative Set Type 10 Hook
with ceiling attachment**

Stainless steel cable Ø
0,45 mm, 0,54 mm und 0,63 mm
tensile strength 1.570N/mm²
wrench-opening of hook 2,5 mm
WLL:
Ø 0,45 mm 1,0 kg
Ø 0,54 mm 2,0 kg
Ø 0,63 mm 2,5 kg

All other type 10 holders are also suitable; see "Mini" catalog

Adaptable to customer specifications!

Special profile compatible with illustration **01**.
Cable holder with groove nut M4.

Tensioning between Ceilings and Floors | Tensioners & Holders

Vertical & Horizontal

These tensioning systems with tensioners and holders in 3 different designs are suitable for horizontal installation from wall to wall, as well as for vertical applications from ceiling to floor.

A holder and a tensioner are necessary for all suspensions.



01

Tensioner Ellipse

Vertically or horizontally usable with free-wheel for tensioning of cable, Art. no. 193.005.330

Tensioner Cone

Art. no. 193.005.329

Tensioner Cylinder

Art. no. 193.005.331

Installation sequence

Please follow the recommended installation procedure when suspending with tensioners and holders (see page 15).



02

Holder Type 15 Ellipse

Suitable for vertical or horizontal installation with freewheel for positioning, Art. no. 193.005.333

Holder Type 15 Cone

Art. no. 193.005.328

Holder Type 15 Cylinder

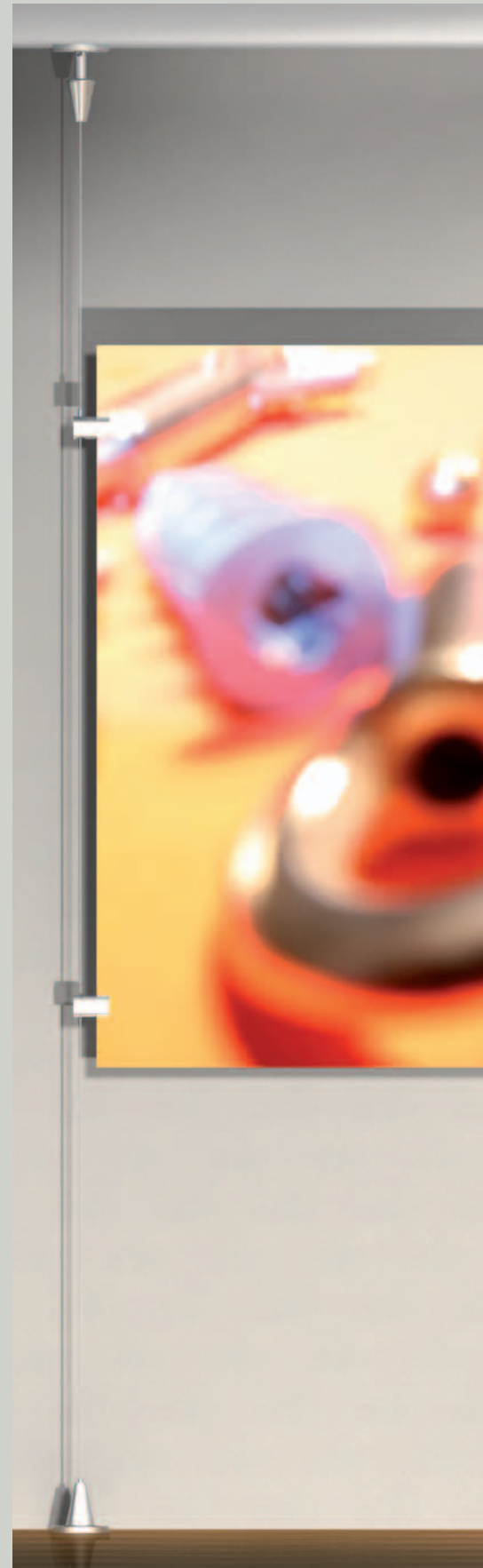
Art. no. 193.005.334



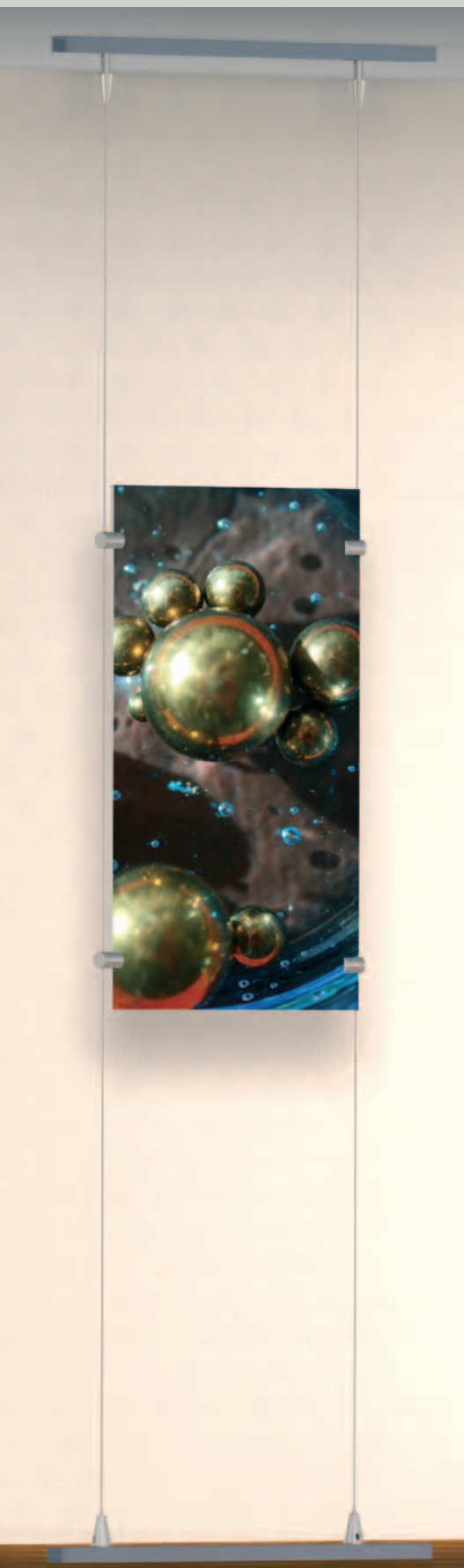
03

Tensioning holder Type 25 VZW right/left

for Cable-ø to 2,5 mm
Art. no. 193.006.002

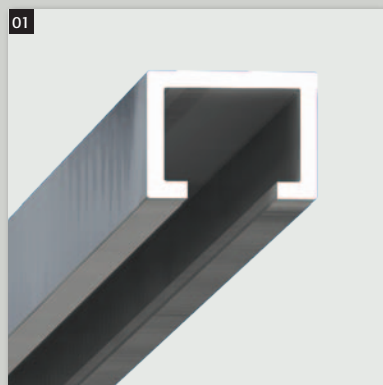


Tensioning between ceilings and floors | Ceiling- and floor-track



Flexible between ceiling and floor

The use of special ceiling- and floor-tracks and complementary tensioners and holders make it possible to move a tensioned cable without the slightest effort.



01 Ceiling-/floor-track aluminum

Usable on or under plaster;
available in various lengths



02 Tensioner for track Cylinder

Attachment to ceiling track;
Art. no. 193.005.458

Tensioner for track Ellipse

Art. no. 193.005.449

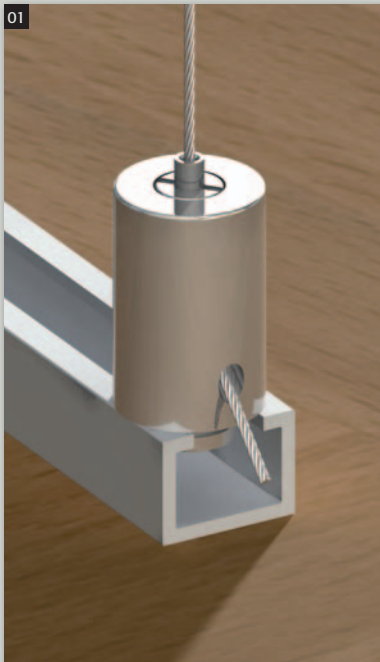
Tensioner for track Cone

Art. no. 193.005.457

Installation sequence

- A** Attachment of tensioner
- B** Attachment of holder
- C** Insertion of cable with sleeve in tensioner
- D** Installation of display holder
- E** Insertion of cable into holder, with preliminary tensioning
- F** Tensioning of cable by turning tensioner

Tensioning between ceilings & floors | special solutions



01

Holder Type 15 for track Cylinder

Art. no. 193.005.448

Holder Type 15 for track Ellipse

Art. no. 193.005.446

Holder Type 15 for track Cone

Art. no. 193.005.447

Tensioning without attachment to floor

When neither floor-track nor holder are suitable, tensioning can be accomplished with a suspended counterweight, which provides for a taut cable.

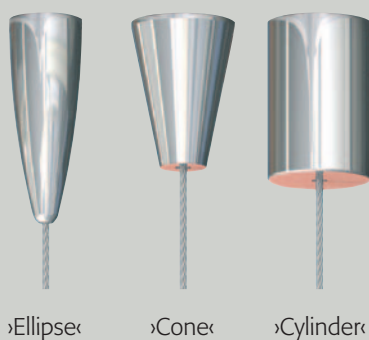


02

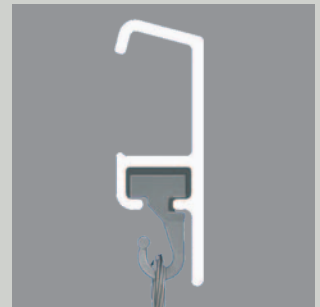
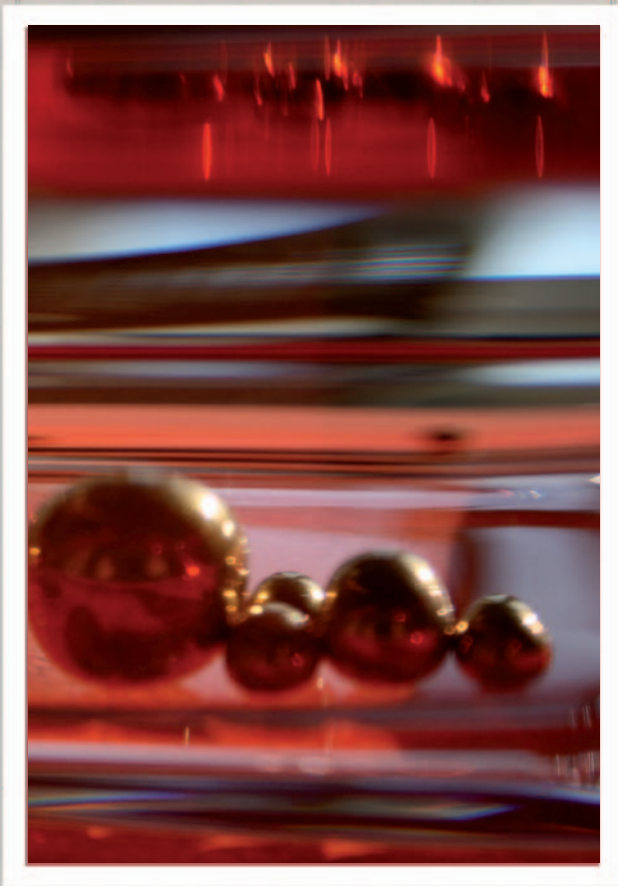
Combination of holder Type 18 M5x10 o.R. with counterweight Ø 35x70 – M5i; nickel plated;

height of holder	20 mm
ø counterweight	35 mm
Height	70 mm
Weight	appr. 500 g
Art. no.	193.005.988

Counterweights for other
cable holders on demand.



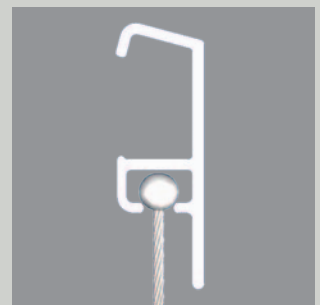
Suspension on walls | Gallery tracks



Coupling with sliding hook, laterally inserted. See illustration 06



Coupling with t-sleeve 02; laterally inserted. See page 37



Coupling with ball-sleeve 35; laterally inserted. See page 37

Simple installation on walls



1. Insert suitable dowel into wall



2. Screw in screw with clamp, washer and O-ring

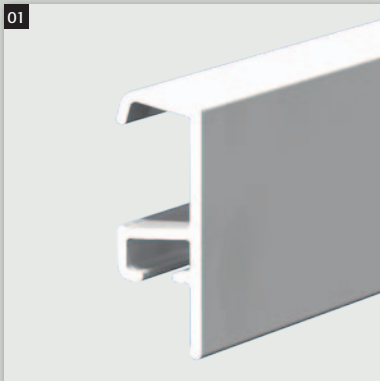


3. Attach track to upper edge of holding clamp



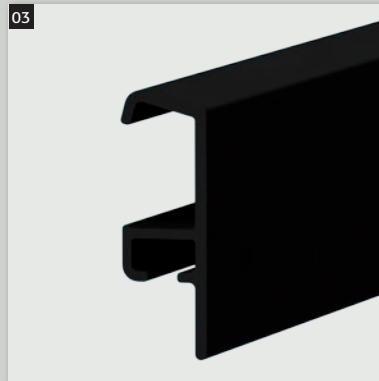
4. Press-on lower edge of track until it snaps into place. Done!

Suspension on walls | Gallery track



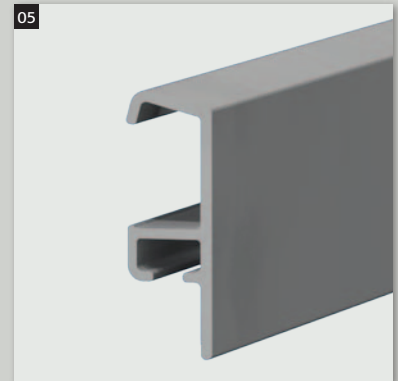
01
**One-part gallery track
white**

Aluminum profile white,
Length 3.000 mm, including
6 gliding hooks, attachment parts
instruction sheet
Art. No. 029.005.213



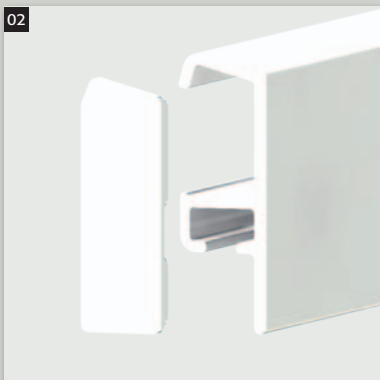
03
**One-part gallery track
black**

Aluminum profile black,
Length 3.000 mm, including
6 gliding hooks, attachment parts
instruction sheet
Art. no. 029.005.266



05
**One-part gallery track
silver**

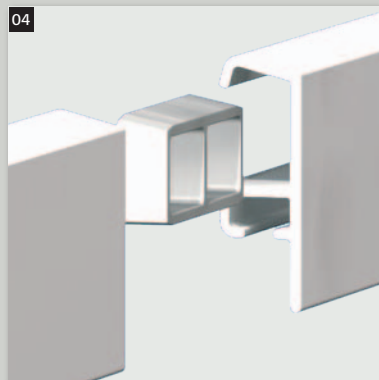
Aluminum profile silver,
Length 3.000 mm, including
6 gliding hooks, attachment parts
instruction sheet
Art. no. 029.005.211



02
End caps

for one-part gallery track,
one left/right each per pack

PVC white	Art. no. 029.005.217
black	Art. no. 029.005.290
silver	Art. no. 029.005.291



04
Track connectors

for connecting one-part
gallery tracks

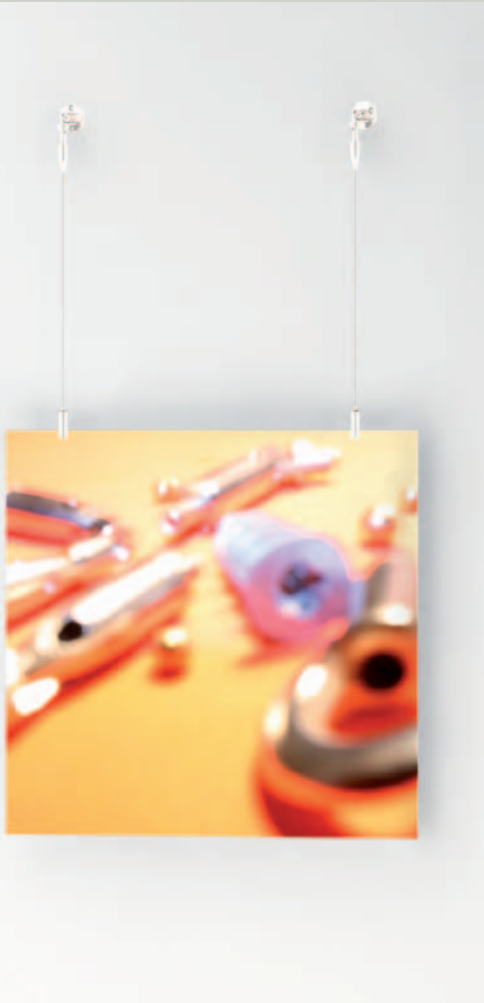
PVC white	Art. no. 029.005.219
-----------	----------------------



06
Gliding hooks

die-cast zinc
insertable in one-part gallery tracks,
Art. no. 029.005.215

Suspension from walls | hinged tensioner



Suspension from walls, with suitable spacing

Hinged tensioners in three different designs let you perfectly hang objects directly from the wall without being "glued" to it.

They also permit suspensions with one or more cables. This version restricts flexibility to the objects' height adjustment; horizontal placement is fixed.



01

Hinged tensioner Cone

Usable for vertical, horizontal and diagonal applications, with free-wheel for tensioning the cable
Art. no. 193.005.374

Hinged tensioner Ellipse

Art. no. 193.005.373

Hinged tensioner Cylinder

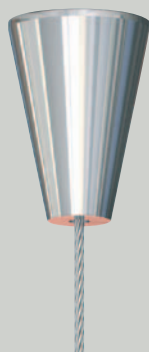
Art. no. 193.005.375

Installation sequence

- A** Attach tensioner
- B** Insert cable with sleeve into tensioner
- C** Install display holder
- D** Adjust to desired height by moving display holder



»Ellipse«



»Cone«



»Cylinder«

Suspension on walls | Extendable Rods

Variable & versatile

REUTLINGERs extension rods for walls can be variously used as clothing rack, extended suspension or support element for shelves.



The starting unit ›Basic‹ and its extending parts ›Plus‹ lets you realize practically all shapes and lengths.



01 **Signage extender Basic 70**

Starting element for extendable rods, length 70 mm for attaching signs with cables

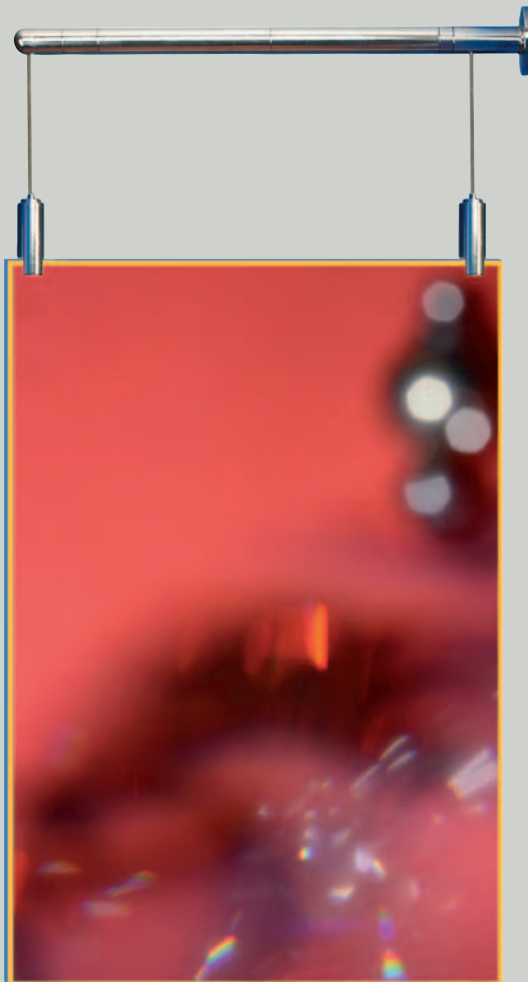
Art. no. 193.005.436
(illustration not to scale)



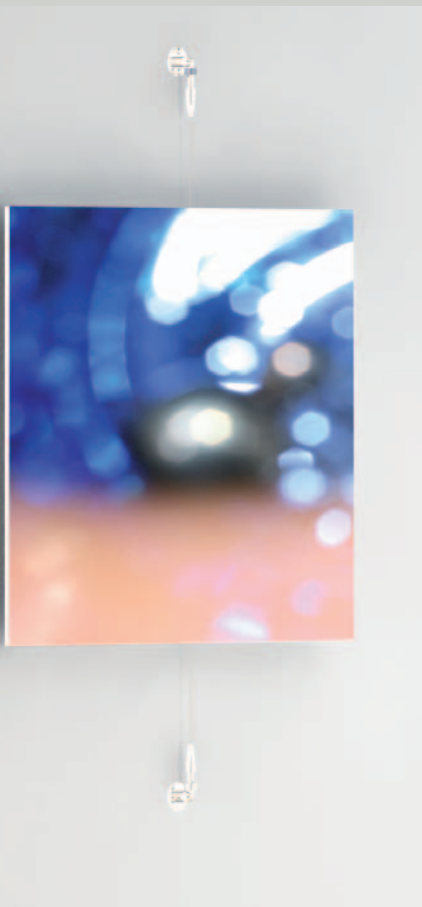
02 **Extension part Plus**

for all extendable rods, with coupling thread
Art. no. 029.005.612

Length	Art. no.
20 mm	029.005.611
30 mm	029.005.612
40 mm	029.005.613
100 mm	029.005.614



Tensioning on walls | Hinged tensioners and holders



Installation sequence

- A** Attach tensioner
- B** Attach holder
- C** Insert cable with sleeve into tensioner
- D** Install display holder
- E** Insert cable into holder and then pre-tension
- F** tension cable by turning tensioner

Tip: Horizontal tensioning

Cables tensioned with hinged tensioners or tensioning holders can also be installed horizontally, in which case cables might sag. This can be prevented by using central supports; see page 39.

Adaptable and attractive design

Some spaces are simply not suitable for straight tensioning and suspensions. For these cases we've designed hinged tensioners and holders, which are especially useful where only one wall space is available.

Further possible applications are diagonal spans from wall to wall or tensioning on slanted ceilings.



01
Hinged tensioner Cone

Suitable for vertical, horizontal and diagonal applications, usable with free-wheel for tensioning cables
Art. no. 193.005.374

Hinged tensioner Ellipse

Art. no. 193.005.373

Hinged tensioner Cylinder

Art. no. 193.005.375



02
Holder Type 15 hinged Cone

suitable for vertical, horizontal and diagonal applications, with freewheel for straightening
Art. no. 193.005.371

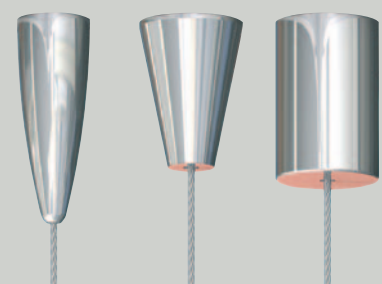
Holder Type 15 hinged Ellipse

Art. no. 193.005.370

Holder Type 15 hinged Cylinder

Art. no. 193.005.372

Distance from the wall is changeable by using extending elements (see page 19)

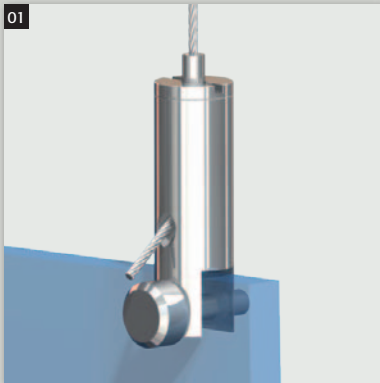


›Ellipse‹

›Cone‹

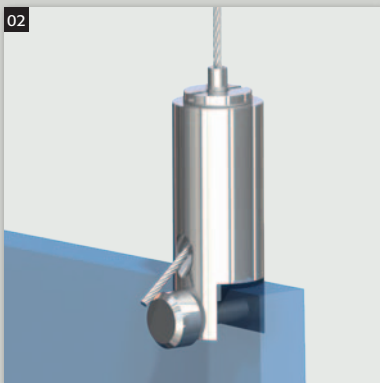
›Cylinder‹

Attaching exhibits to cable | Display holder ›Top‹



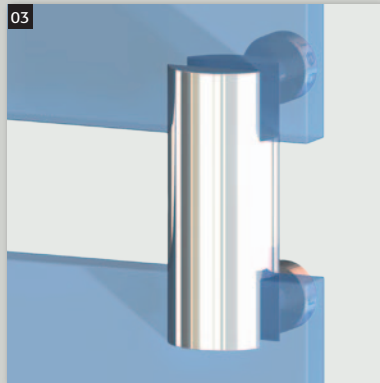
01
**Displayholder Type 15 Top 65 D
nickel plated**

with completely threaded screw for
heavy displays up to 6 mm thickness
Art. no. 193.006.115



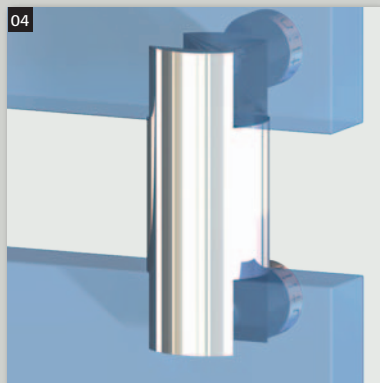
02
**Displayholder Type 15 Top 100 D
nickel plated**

with completely threaded screw for
heavy displays up to 10mm thickness
Art. no. 193.006.117



03
**Fork connector
Top 65**

for displays up to 6,0mm thickness,
with 2 set-screws and two affixing
screws, Art. no. 193.006.004



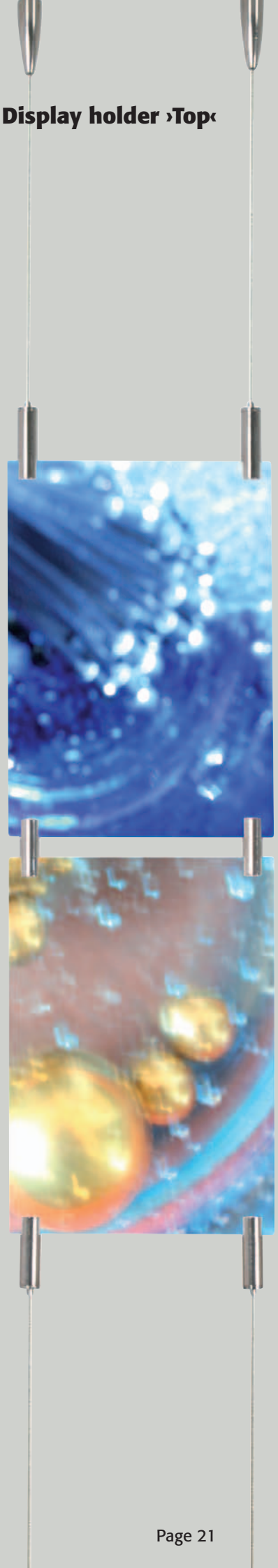
04
**Fork connector
Top 105**

for displays up to 10 mm thickness,
with 2 set screws and 2 affixing
screws, Art. no. 193.006.003

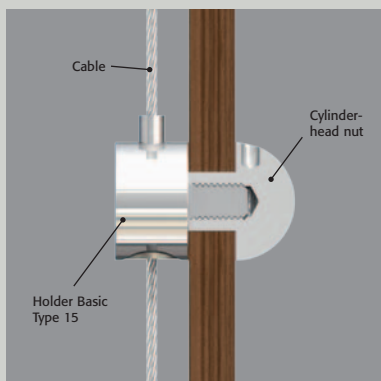
Tip: Affixing of displays

Affixing displays is easily done by
using the REUTLINGER screw, or
nylon or steel set-screws.

All three varieties are included
when ordering the holder.



Attaching objects to cables | Displayholder ›Avant‹



Displayholder Avant 100

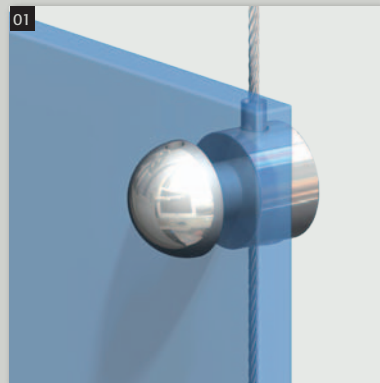
“Infront of...” or “between”?

Whether using straight or hinged tensioners, attaching the exhibit is always done the same way. Various display holders offer flexibility and unusual perspectives.

Displays can be attached to a single tensioned cable (display holder ›Avant‹) as well as between two cables (display holder ›Side‹).

New design

REUTLINGER display holders are now available in ›Hemi-spherical‹

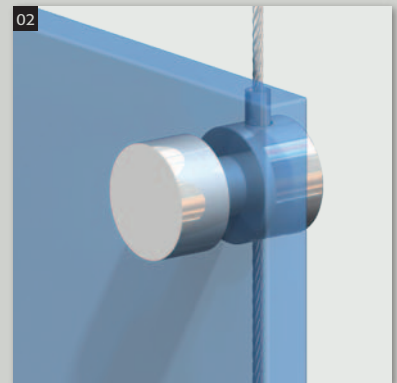


Displayholder Type 15 Avant 60 Hemi-sphere

Attachment in front of cable, for displays of 6 mm thickness
Art. no. 193.000.878

Displayholder Type 15 Avant 100 Hemi-sphere

Attachment in front of cable, for displays of 10 mm thickness
Art. no. 193.000.879

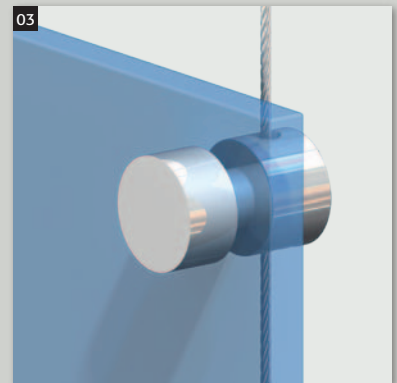


Displayholder Type 15 Avant 60

Attachment in front of cable, for displays of 6 mm thickness
Art. no. 193.005.420

Displayholder Type 15 Avant 100

Attachment in front of cable, for displays of 10 mm thickness
Art. no. 193.005.421



Cable guide Avant 60

Guide without clamping mechanism to match holder ›Avant‹ for displays of 6 mm thickness
Art. no. 193.005.424

Cable guide Avant 100

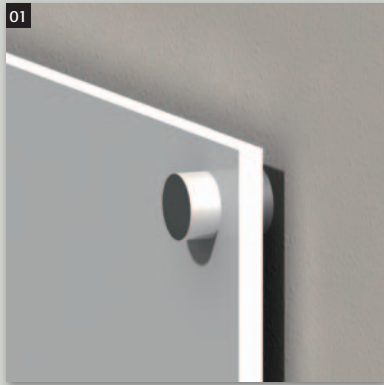
for Displays of 10 mm thickness
Art. no. 193.005.425

Protecting screen Bo8

Nylon screen with 8 mm bore for the protection of acrylic and glass, and to compensate for less thick displays
Art. no. 029.005.631

Attaching to walls without the use of cables

Simple, economical and yet high-quality: wall adaptor ›Avant‹ is suitable for attaching business signs or information plates on walls. Screw woodscrew into wall, slip on the distance ring, attach sign, screw on cover. That's all there is to it.



01

Wall adaptor Avant 8

Attachment of displays to walls/signs of 10 mm thickness, distance sign-to-wall 8 mm

Art. no. 193.000.757

Wall adaptor Avant 15

Attachment of displays to walls/signs of 10 mm thickness, distance sign-to-wall 15 mm

Art. no. 193.000.758

Long wall adaptor Avant 47

Attachment of displays to walls signs of 10 mm thickness, distance sign-to-wall 47 mm

Art. no. 193.001.900



02

Wall adaptor Avant 8 D with theft-secure attachment

Attachment of displays to walls 10 mm thickness, distance sign-to-wall 8 mm

Securing of screw-cap with set-screw M3x4; allen-key included;

Art. no. 193.000.876

Protecting screen Bo6

Nylon screen with bore \varnothing 6 mm for the protection of acrylic and glass

Art. no. 029.005.626

Notice

All wall adaptors include wood screws M6x50 (for dowel S6).



03

03

Wall adaptor Avant 8 Hemi-sphere

wall attachment for displays of 10 mm thickness; distance sign-to-wall 8 mm, Art. no. 193.000.877

Wall adaptor Avant 15 Hemi-sphere

wall attachment for displays of 10 mm thickness; distance sign-to-wall 15 mm, Art. no. 193.000.895

Attaching objects to cables | Displayholder ›Side‹

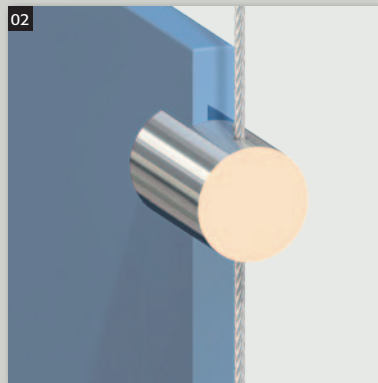


Not just displays, but clothing and other exhibits are easily and flexibly attached to vertical cables with display-holders Avant and Side.



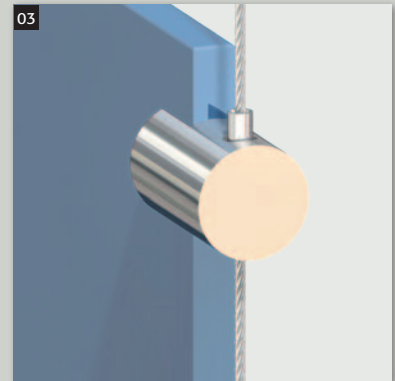
01
Displayholder Type 15 Side L 65
left lateral attachment, for displays up to 6,0 mm thickness
Art. no. 193.001.378

Displayholder Type 15 Side L 105
left lateral attachment, for displays of up to 10mm thickness
Art. no. 193.001.376



02
Cable guide Side LR 65
lateral cable guide left/right, for displays up to 6 mm thickness 1,5 mm, Art. no. 193.005.472

Cable guide Side LR 105
lateral cable guide left/right, for displays up to 10 mm
Art. no. 193.005.473



03
Displayholder Type 15 Side R 65
right lateral attachment, for displays up to 6 mm thickness,
Art. no. 193.001.377

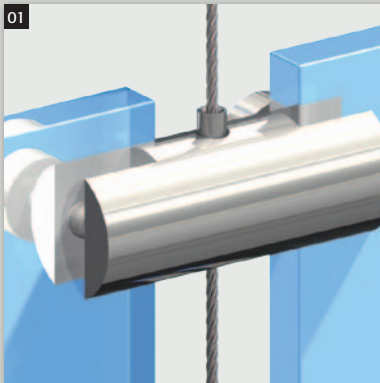
Displayholder Type 15 Side R 105
right lateral attachment, for displays up to 10 mm thickness,
Art. no. 193.001.375

Cable guides

A cable-guide (without clamping mechanism) is used for securing the bottom of objects. This leaves both hands free for the adjustment on the top two holders

1) German utility patent
20 2005 002 707.3

Attaching objects to cables | Displayholder ›Side‹



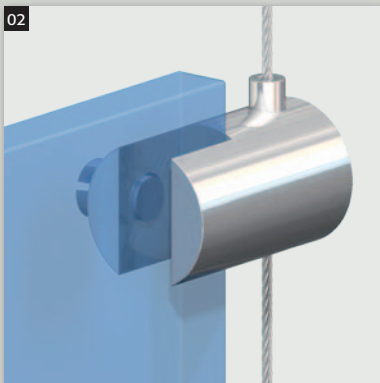
01

Displayholder Type 15 Side M 65

for displays up to 6 mm thickness
Art. no. 193.001.073

Displayholder Type 15 Side M 105

for displays up to 10 mm thickness
Art. no. 193.001.072



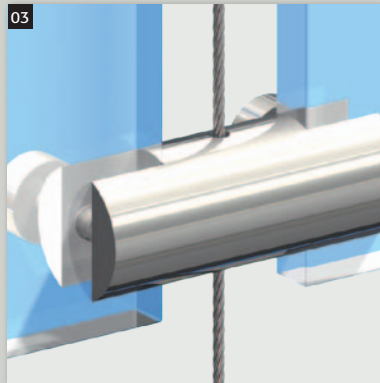
02

Glas-Display-Holder Type 20 Side R 60

for glass thickness up to 5 mm,
cables- \varnothing up to 2,0 mm,
Art. no. 193.001.885

Glas-Display-Holder Type 20 Side L 60

For glass thickness up to 5 mm
Art. no. 193.001.890



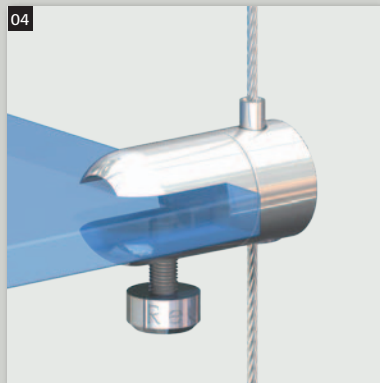
03

Cable guide Side M 65

guide without clamping mechanism
suitable for holder Center, for
displays of up to 6 mm thickness
Art. no. 193.006.005

Cable guide Side M 105

for displays up to 10 mm thickness
Art. no. 193.006.006



04

Displayholder Type 15 Universal Soft 65

For displays up to 6 mm thickness
Art. no. 193.001.850

Displayholder Type 15 Universal Soft 105

For displays up to 10 mm thickness
Art. no. 193.001.860



The clever suspension component for
central attachment of displays.

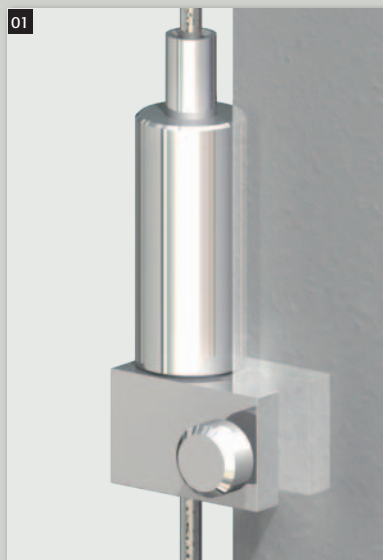
Specifically for glass panes

Holder clamps very tightly without
damaging material (custom-made
sizes on request).

Attaching objects to bars | Displayholder ›Side‹

New possibilities for a proven principle

The REUTLINGER system of displayholders was especially adapted for the use of 3mm spokes (bars) and threaded screw-on sleeves.

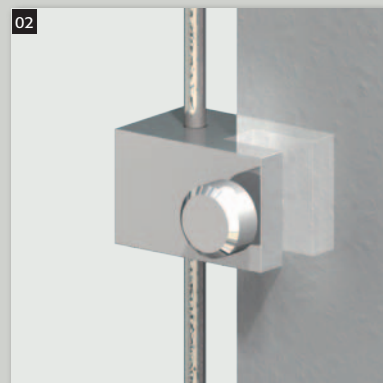


01
Bar-holder Type 30 Side 65 ¹⁾

for displays up to 6 mm thickness
and bars of Ø 3 mm
Art. no. 193.001.071

Bar-holder Type 30 Side 105

for displays up to 10 mm thickness
and bars of Ø 3 mm
Art. no. 193.001.070



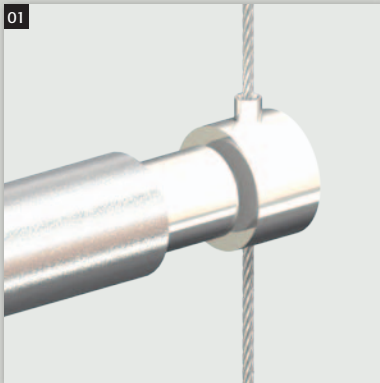
02
**bar-guide
Type 30 Side 65**

for displays up to 6 mm thickness
and bars of Ø 3 mm
Art. no. 193.001.068

bar-guide Type 30 Side 105

for displays up to 10 mm thickness
and bars of Ø 3 mm
Art. no. 193.001.067

Attaching objects to cables | Displayholder ›Tube‹



01

Displayholder Type 15 Tube 16/12

Cable attachment for pipes of interior diameter 12 mm

Art. no. 193.005.456

Displayholder Type 15 Tube 20/16

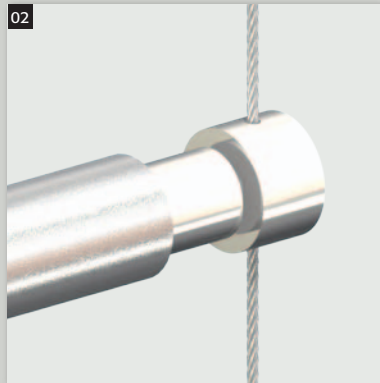
for pipes of interior diameter 16 mm

Art. no. 193.005.460

Displayholder Type 15 Tube 25/21

for pipes of interior diameter 21 mm

Art. no. 193.005.461



02

Cable guide Tube 16/12

cable guide without clamping mechanism, for interior diameters 12 mm

Art. no. 193.005.459

Cable guide Tube 20/16

for interior diameter 16 mm

Art. no. 193.005.462

Cable guide Tube 25/21

for interior diameter 21 mm

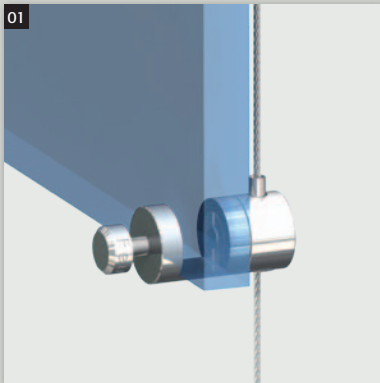
Art. no. 193.005.463

Notice:

Pipes are not included in attachments with display holders.



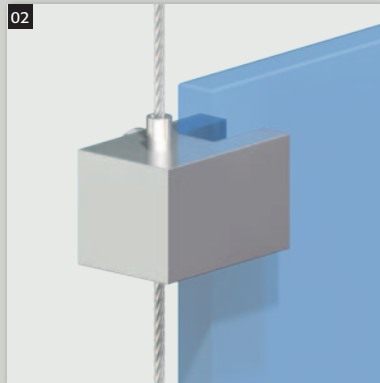
Attaching objects to cables | Displayholders ›Frontal‹ und ›Quader‹



01
Displayholder Type 15 Frontal 105 nickel plated

Object attachment in front of cable;
for displays of up to 10mm thick-
ness; with 4 affixing screws

Cylinder diameter	16 mm
Length	30 mm
Art. no.	193.006.390



02
Displayholder Type 15 Quader L65 nickel plated

left lateral attachment,
for displays up to 6 mm thickness,
with affixing screw

Art. no. 193.006.792

Displayholder Type 15 Quader L105 nickel plated

for displays up to 10 mm thickness

Art. no. 193.006.791



03
Displayholder Type 15 Quader R65 nickel plated

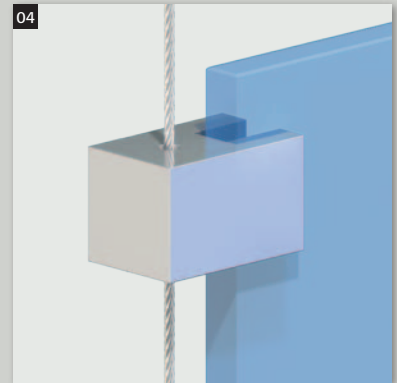
analogous to 02, right side

Art. no. 193.006.787

Displayholder Type 15 Quader R105 nickel plated

analogous to 03, right side

Art. no. 193.006.786



04
Cable guide Type 15 Quader LR65 nickel plated

lower cable-guide, suitable for
Displayholder Quader L65 or R65,
without clamping mechanism

Art. no. 193.006.790

Cable guide Type 15 Quader LR105 nickel plated

lower cable guide, suitable for
Displayholder Quader L105 oder
R105, without clamping mechanism

Art. no. 193.006.789

Attaching objects to cables | Multiple-cable suspension



01
Cable holder Type 18ZW
with hub

Attaches to single cable suspension
with cables from Ø 0.8 to 1.8 mm
3-cable version Art. no. 193.000.367
4-cable version Art. no. 193.000.366

Important notice!

Suspension from hub with
maximum diameter 1,5 mm
(3- and 4-cable-versions)



02
Cable holder Type 25ZW
with hub

Attaches to single cable suspension
with cables-ø 2,5 mm
3-cable version Art. no. 193.000.128
4-cable version Art. no. 193.000.046

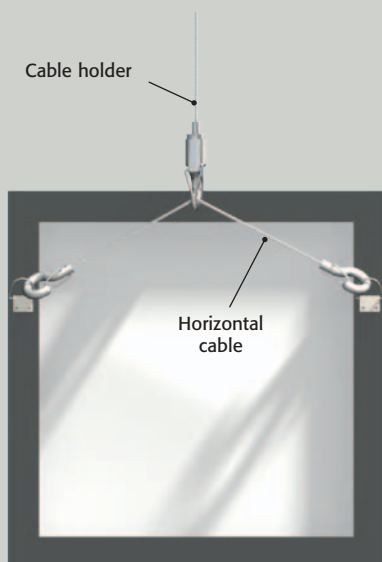


Attaching objects to cables | cable- and gallery holders



Great masters – masterly attached!

Show to open in an hour and nothing hung yet? With the use of our gallery system it's child's play. Insert cable into holder, attach exhibit, adjust without tools! Picture is hung!



Cable holder Hook



01 Cable holder Type 15 hook

Attaches to horizontal reverse-side cable or eyelet; reduced loadability
Art. no. 193.000.163

Cable holder Type 18 hook

For vertical cables \varnothing 1,8 mm
Art. no. 193.000.121



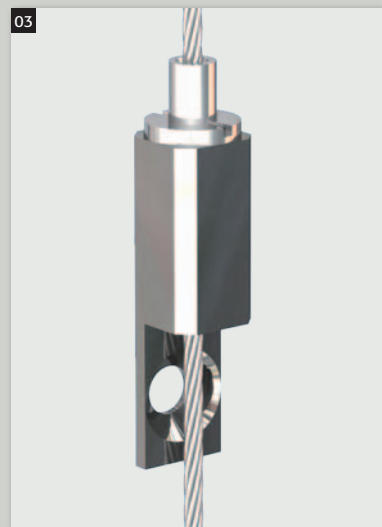
02 Safety-design holder Type 15 hook

with safety gate
3.001.400

Safety-design holder Type 18 hook

With safety gate, for cables up to 1,8 mm
Art. no. 193.001.512

European design patent
Nr. 000 169 594-0001 + 0002



03 Gallery holder Type 25 Bo6

Attachment to vertical structures, for vertical cables up to \varnothing 2,5 mm
Art. no. 193.000.294

Gallery holder Type 15 Bo3

For vertical cables of up to \varnothing 1,5 mm
Art. no. 193.000.147

Gallery holder Type 18 Bo4

For vertical cables of up to \varnothing 1,8 mm
Art. no. 193.000.015

Objects on walls | Extendable rods



Wall shelves

Another useful application of holders is the combination with extendable rods.



01
Rod base Basic 40

Initial base for extendable rods
length 40 mm with O-rings provide
support for shelves
Art. no. 193.005.437
(illustration reduced in scale)



02
**Rod base for clothes-hanging
applications Basic 40**

Initial base for extendable rods
length 40 mm with washer
Art. no. 193.005.438
(illustration reduced in scale)



03
Extension element Plus

for all extensions coupling thread
Art. no. 029.005.612

Length	Art. no.
20 mm	029.005.611
30 mm	029.005.612
40 mm	029.005.613
100 mm	029.005.614

Shelving system | Basic construction



A different kind of product presentation

The shelving system for exceptional exhibition of exceptional products. Multiple combination possibilities make for a highly loadable and completely secure solution for all architectural requirements. Suitable for shelves of any material. Maximum loadability varies with types of construction. We offer individual solutions on demand.



01

Hinged tensioner Cone

Suitable for vertical, horizontal and diagonal applications; with free-wheel for tensioning cable.

Art. no. 193.005.374

Hinged tensioner Ellipse

With elliptical cap

Art. no. 193.005.373

Hinged tensioner Cylinder

With cylindrical cap

Art. no. 193.005.375



02

Hinged holder Type 15 Cone

Suitable for vertical, horizontal and diagonal applications; with free-wheel for tensioning cable.

Art. no. 193.005.371

Hinged holder Type 15 Ellipse

With elliptical cap

Art. no. 193.005.370

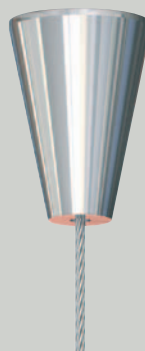
Hinged holder Type 15 Cylinder

With cylindrical cap

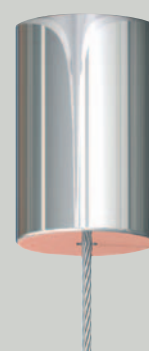
Art. no. 193.005.372



Design ›Ellipse‹



Design ›Cone‹



Design ›Cylinder‹



01 Shelf extender Basic 70

Initial base for extending rods,
length 70 mm with thread for the
attachment of tensioners

Art. no. 193.005.435
(illustration reduced in scale)



02 Extension element Plus

for all extension rods;
with coupling threads

Length	Art. no.
20 mm	029.005.611
30 mm	029.005.612
40 mm	029.005.613
100 mm	029.005.614



03 Shelf tensioner Ellipse

Tensioning of wall-side cable on
upper extension rod; with threaded
adaptor

Art. no. 193.005.468
(illustration reduced in scale)

Shelf tensioner Cone

Art. no. 193.005.466

Shelf tensioner Cylinder

Art. no. 193.005.469



04 Shelf holder Type 15 Ellipse

Tensioning of of wall-side cable on
lower extension rod, with threaded
adaptor

Art. no. 193.005.470
(illustration reduced in scale)

Shelf holder Type 15 Cone

Art. no. 193.005.467

Shelf holder Type 15 Cylinder

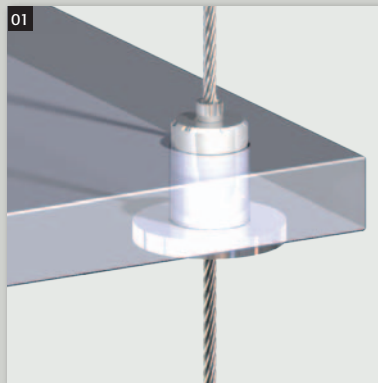
Art. no. 193.005.471

Shelving system | Attachment to cables

Variety and flexibility in shop-design

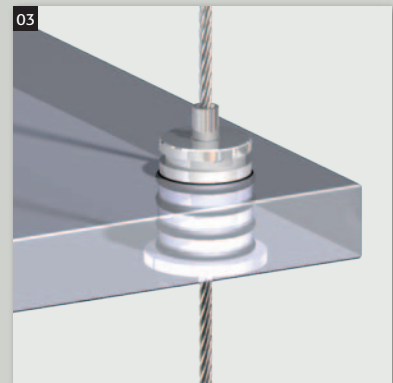
Three different shelving systems
are available:

- lateral suspension of
shelves on cables
- tensioned cable running
through the shelves
- shelves placed on
extendable rods



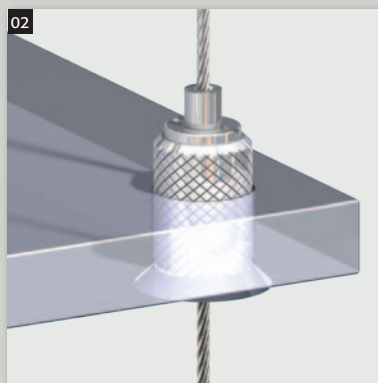
01
Shelf holder Type 15
Bottom B20

tensioned cable runs through shelf,
Art. no. 193.000.146



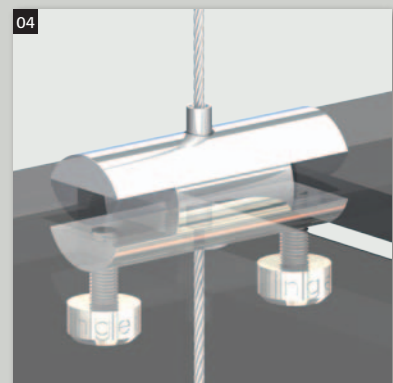
03
Shelf holder Type 15
Bottom 5N10x1,5

with O-ring; tensioned cable
runs through shelf
Art. no. 193.000.144

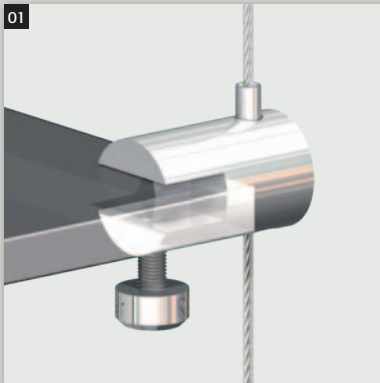


02
Shelf holder Type 18
Bottom B18

tensioned cable runs through shelf;
for cable up to 1.8 mm
Art. no. 193.000.049



04
Shelf holder Center 65
for horizontal displays up to 6 mm
thickness; guides cable between
objects, Art. no.: 193.002.413

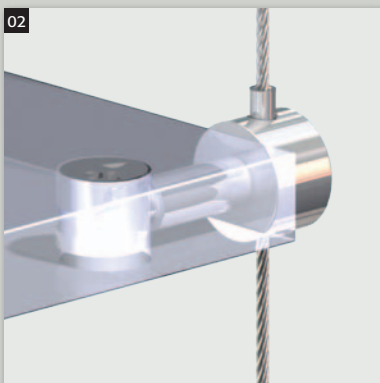


01
Shelf holder Type 15 Side 65

lateral attachment of shelves up to 6mm thickness, usable on left and right side, Art. no. 193.000.376

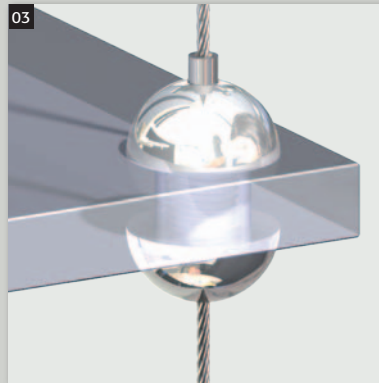
Shelf holder Type 15 Side 105

for shelves up to 10 mm thickness, Art. no. 193.000.375



02
Shelf holder Type 15 Side B24

with housing, lateral gripping of shelves, usable on left and right side, Art. no.: 193.006.001



03
Shelf holder Type 15 Hemi-sphere 100

tensioned cable runs through shelves, for shelves up to 12 mm thickness, shelf bore Ø 10.5 mm Art. no. 193.006.411



04
Combination of holder Type 10 M6x8 and drive-in nut M6x18x20; nickel plated

tensioned cable runs through shelves
Overall length 20 mm
Drive-in depth 18 mm
Coupling thread M6
Art. no. 193.006.383





A suitable cable for all uses and applications

Depending on the exhibit's weight, the chosen combination of wall/ ceiling attachments and coupling of cable/object , three different types of cables, two kinds of constructions and nylon wire are suitable.

The cables are cut and processed according to customers' requirements and equipped with suitable sleeves. This guarantees a maximum of security for the exhibits as well as safety for the visitors.

All REUTLINGER cables are twist-free, flexible and cut-proof.

Stainless steel cable

Non-rusting and acid-resistant steel cable with medium tensile strength

Galvanized steel cable

Steel cable with zinc coating and extra-high tensile strength

Nylon wire

Transparent wire with low tensile strength

Cables | Cable types and terminals



01
Cable loop
Dimensions according to requirements



02
Nylon wire loop
Dimensions according to requirements



03
Z-thimble 5 mm
ø 1,5 mm



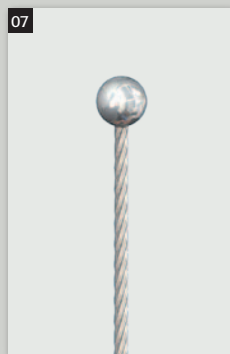
04
wire hook
hook opening 4 mm
WLL 10 kg



05
Wire hook with safety gate
hook opening 4 mm



06
Z-eyelet
ø 5,0 mm



07
ball sleeve
ø 5,0 mm



08
swaged eyelet
ø 5,0 mm



09
cylindrical sleeve
ø 3,5 mm or 5,0 mm,
Length 6,0 mm

Cables			Terminals (cable ends)								
Cable diameter	Material Cables	Construction Cable	Illustration								
			1	2	3	4	5	6	7	8	9
1,0	Stainless	6x7+1SE 1.570 N/mm ²	•			•			•	•	•
	Zinc plated	6x7+1SE 2.300 N/mm ²	•			•			•	•	•
1,2	Stainless	6x7+1SE 1.570 N/mm ²	•			•	•	•	•	•	•
	Zinc plated	6x7+1SE 2.300 N/mm ²	•			•	•	•	•	•	•
1,5	Stainless	6x7+1SE 1.570 N/mm ²	•		•	•			•	•	•
	Zinc plated	6x7+1SE 2.300 N/mm ²	•		•	•			•	•	•
	Nylon		•	•					•		

Important safety precautions

Generally only cables complying with DIN EN 12385-4, 7x7, should be used with these articles. Both galvanized and stainless steel cables are suitable. We recommend not exceeding the WLL of 25kg per cable when using cable of 1.5mm diameter, breaking load is roughly 5 times higher. Impulse loads and vibrations kann seriously reduce system loadability. Always be sure that by using suitable dowels and screws, at least the working load can safely be installed on walls and floors.

Further safety notices and precautions at www.reutlinger.de

Accessories | Power-feed cable - low-voltage systems - spring tensioner



When electrical power is necessary:

REUTLINGER sets with power-feed barrels are often the only solution when a suspended object needs electricity.

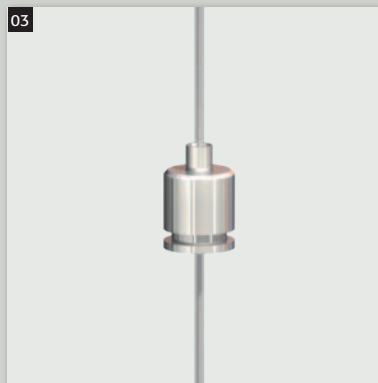


01
Power-feed barrel set
Holder Type 15 M10x6A and power-feed barrel M10x1 with bore.

With flat hex-nut and serrated washer
Art. no. 193.000.795



02
Compensating set Type 15ZW
with coupling thread M10x1
Art. no. 193.000.796



03
Insulating holder Type 12
an low voltage power supply,
nickel plated

for cables- \varnothing 1,0 - 1,2 mm
with and without insulation

Length	10 mm
Diameter	9 mm
Art. no.	193.002.040

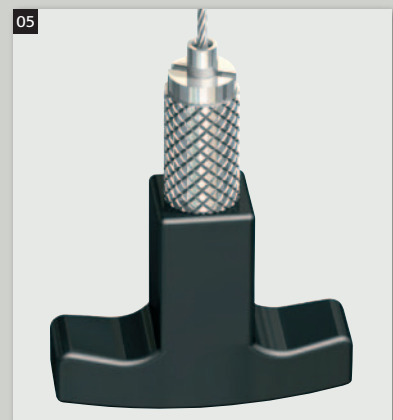
Insulated holders for other
cable diameters on request.



04
Spring tensioner M13x1 nickel
plated, combination of ceiling
attachment M13x1, washer,
spring and screw cap M13x1

for cables up to- \varnothing 2,0 mm

Flange diameter	20 mm
Diameter	16 mm
Length	36 mm
Coupling thread ceiling	M6i
Art. no.	193.006.415



05
tensioner M6 for elastic materials;
combination of holder Typ 15
M6x7 m.R. and T-grip

Holder diameter	9 mm
Overall length	54 mm
Grip width	40 mm
Art. no.	193.001.896

Valuable help with horizontal suspensions

The weight of suspended objects – and even the weight of the cables themselves – can cause horizontal cables to sag. This problem is eliminated when using central supports.



01

Central support Aid 20

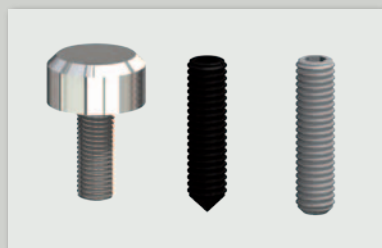
inserted support pieces for horizontal suspensions over long distances, length 20 mm
Art. no. 193.005.416

Central support Aid 40

Length 40 mm
Art. no. 193.005.434

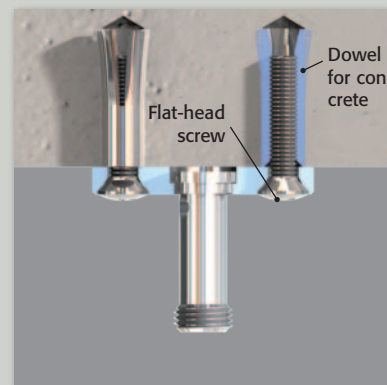
Practice makes perfect

We are happy to share our experience in installing cable systems with our customers. This includes useful aids and accessories that make your work easier and help you save time.



Screws and set-screws

The affixation of displays and/or shelves suspended with holders Side, Top and Universal is always done with either REUTLINGER screws, or set-screws in steel or nylon. All three variants and a suitable Allen key are always included when buying a holder.



Dowel for concrete EM5

1) Dowels available in K6x15 and K6x30 with suitable tools.

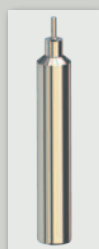


Dowel for concrete K6x5 ¹⁾

Quick insertion into concrete ceilings, floors and walls, suitable for ceiling attachments with M6i
Art. no. 029.005.615

Concrete drill with stop K6 BB

Correct depth for concrete dowel K6,
Art. no. 029.005.618



Drive-in tool K6x5 ESW

For installation of dowel K6x5 with all common drills,
Art. no. 029.005.620



Dowel for concrete EM5

With interior thread M5 for all applications with attaching plates,
Art. no. 029.005.627

Setting tool EM5 SWZ

For manual setting of dowels EM5,
Art. no. 029.005.628



Have we gotten you interested?
Do you have questions concerning
technical details?

Give us a call.

Please ask for further
available brochures:

Mini

Cable holder & accessories
Type 10, 12

Standard

Cable holder & accessories
Type 15, 18, 20

High-Load

Cable holder & accessories
Type 25, 30, 50

Galerie

Suspension systems for galleries
and exhibitions

Fairs and Production Sets

Cable holders and accessories
Type 50 SV II and Type 80 SV II

**Sales & Consultations
Germany**

Andreas Mixa
+ 49 (0) 69 965228-37
a.mixa@reutlinger.de

Hans-J. Arendt
+49 (0) 69 965228-16
hj.arendt@reutlinger.de

**Sales & Consultations
Foreign**

John Robinow
+49 (0) 69 965228-22
j.robinow@reutlinger.de

Silvia Kopka
+49 (0) 69 965228-12
s.kopka@reutlinger.de

Reutlinger GmbH

Offenbacher Landstr. 190
60599 Frankfurt
Germany

Phone +49 (0) 69 965228-0
Telefax +49 (0) 69 96522830

E-Mail info@reutlinger.de
Internet www.reutlinger.de

Managing Director:
Dipl. Ing. Wolf Reutlinger
HRB Frankfurt 33321

USt-ID DE 114 209 718